

### Glide Controlled Release Formulations

Glide SDI® (Solid Dose Injector) is an innovative, patented drug delivery system for the injection of drugs and vaccines in a solid dosage form. The Glide SDI® employs a simple spring based mechanism, which ensures the system is easy to use and cheap to manufacture.

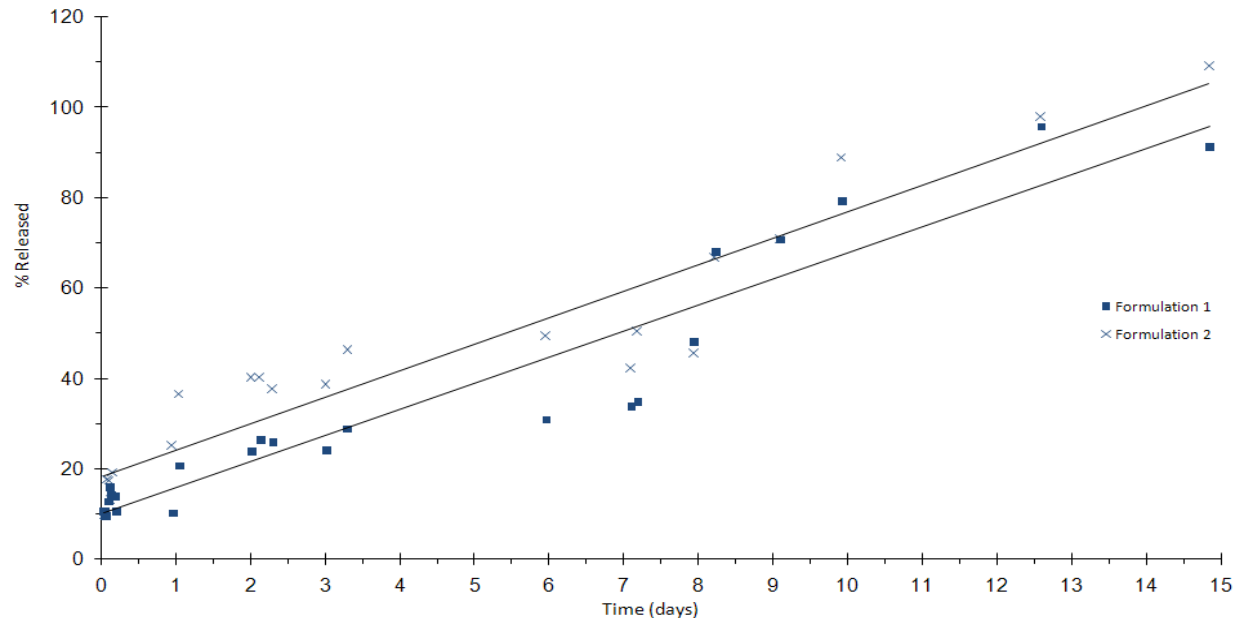
Controlled and sustained delivery of injectable drugs is one of the fastest growing areas of the pharmaceutical industry. However, these formulations often require a large diameter needle and deep penetration, which can be very painful to the patients and often requires administration by trained healthcare professionals. The Glide SDI provides an elegant solution to these problems.



*the Glide SDI*

### Results

A two week release profile (see Figure below) has been demonstrated with a highly water soluble peptide (Compound X) through the combination of 2-3 polymeric compounds, which are compatible with the Glide implant manufacturing process. It can be seen that the formulations have a close to zero order release profile with minimal initial burst.



*controlled release of drug X over 2 weeks*

### Tuneable Release Profiles

All excipients used in these formulations have a history of use in approved parenteral products or have GRAS status.

Varied release profiles can be created through changing the ratios of the drug and polymer components as well as manipulating process conditions.